

# Preset counters mechanic

## Meter counters PTB approved, adding

### Display 5 digits, manual reset by lever

#### ME280 PTB



ME280 - PTB Meter counter

#### Features

- PTB Preset counter with one preset
- Meter counter
- Adding
- Display 5-digits
- Reset by lever

#### Technical data - electrical ratings

Preset	1 preset
Preset setting	Press reset button and hold. Enter desired value in any order. Release reset button.
Limit switch	Trigger at preset 1 (adding)
Output contact	Change-over contact
Switching voltage	230 VAC / VDC
Switching current	2 A
Switching capacity	100 VA / 30 W
Spark extinguisher	Recommended for inductive load

#### Technical data - mechanical design

Function	PTB Meter counter with preset
Display	White numbers on black Decimal digits in red
Number of digits	5-digits
Digit height	7 mm
PTB approval	1.5 / 80.13
Count mode	Adding in a rotational direction to be indicated, subtracting in reverse direction. 2 revolutions = 100 counts
Drive shaft	Both sides, $\varnothing 7$ mm
Reset	By reset lever to preset value. Do not let snap lever or make jerky movements.
Measuring speed	2 revs. = 100 digits = <25.00 m/min
Measuring precision	1 cm
Measuring range	999.99 m
Operating temperature	0...+60 °C
Housing type	Surface mount housing
Housing colour	Grey
Dimensions W x H x L	120 x 105 x 95 mm
Dimensions mounting plate	158 x 105 mm
Mounting	Base plate, 4 mounting holes
Weight approx.	1400 g
Material	Aluminium die cast alloy
E-connection	Terminal block connector

# Preset counters mechanic

Meter counters PTB approved, adding

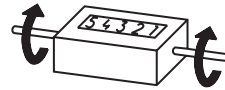
Display 5 digits, manual reset by lever

## ME280 PTB

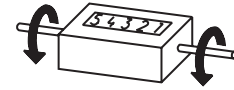
### Part number

ME280.0	6	0	G		C
					Measuring range
				C	999.99
					Count mode /Direction of rotation
				01	2 revs. = 100 digits / I
				02	2 revs. = 100 digits / II
					Housing
			G		Surface mount housing, grey
					Preset / reset
	6				2 preset / reset lever, permanent contact

### Direction of strokes and rotation



Away from user  
Sense of rotation I



Towards user  
Sense of rotation II

### Accessories

#### Measuring wheels (page %S)

MR512.07A Circumf. 50 cm, knurled aluminium

MR542.07D Circumf. 50 cm, smooth Hytrel TPE-E

MR552.07A Circumf. 50 cm, smooth Vulkollan PUR

MR562.07A Circumf. 50 cm, knopped rubber NBR Nitril

MR592.07D Circumf. 50 cm, grooved Hytrel TPE-E

### Dimensions

